



СЕРВИЗНО ОБОРУДВАНЕ КОСЕР, ЧЕТВЪРТО ИЗДАНИЕ

СОНДА ЗА ДИАГНОСТИКА С РАЗЛИЧНИ ФУНКЦИИ



0V
to
30V



АКУМУЛАТОРНО ЗАРЯДНО/СТАРТЕР 60/560A 12/24 230V



12V

24V



- Probably the most advanced automotive probe on the market, with a huge range of functions for effective automotive diagnostics, making short circuits and bad earths easy to find.
- Features a scope function to visually test component signals, with the added benefit of maximum/minimum volts, frequency and duty cycle displayed.
- Allows components to be activated in situ or prior to installation.
- The fly lead allows continuity and polarity testing with a high-contrast colour LCD display giving a 7mm high read-out.
- Features an audible continuity and positive/negative voltage indicator.
- Two integral work lights.
- 6mtr Lead connects to the battery supply and reaches to all areas of the vehicle.
- Includes a cigarette lighter adaptor.
- Supplied in carry-case.
- **Model No. PP100**

- Max. Charge: 90Amps (60Amps EN).
- Max. Start: 560Amps (350Amps EN).
- 20Amps Max. Input (start).
- Polarity protected.
- Heavy-duty starter/charger for professional garages, workshops and bodyshops.
- Large wheels for easy mobility and features analogue ammeter and switchable charge circuitry for accurate charge control.
- **Model No. START560**

МИВКА С ОБЕМ 15Л, ЕЛ. ДВИГАТЕЛ ЗА ТЕЧНОСТТА 230V, ВИС/ШИР/ДЪЛЖ: 225/295/390 ММ



15ltr

- Suitable for bench mounting or portable use.
- One-piece tank with triple baked finish and fully sealed magnetic drive pump unit with replaceable impellor.
- Lid features self-latching fusible link which automatically snaps lid shut in the event of a fire.
- Fitted with flexible, metal delivery nozzle.
- Tank includes removable shelf.
- **Model No. SM21**

ЦИФРОВ ДИНАМОМЕТРИЧЕН КЛЮЧ 1/2" 20-200NM



610mm

20-200Nm

1/2"
Sq Drive



- LCD read-out with LED/audible alarm indicates achieved and target torque levels.
- Features angle mode, eliminating the need for angle gauges and protractors providing the most accurate and fastest way to measure torque plus angle tightening sequences.
- Will also accumulate angle measurement when multiple turns are required, ideal for use where access is limited.
- Preset desired torque levels or track peak and working torques using simple push-button menu.
- Selectable read-out in Nm, lb.in, lb.ft, kgf.m or degrees.
- Reversible Chrome Vanadium 72-tooth ratchet allows torque reading in either direction.
- Accurate to $\pm 2\%$ between 10% and 100% of wrench's stated capacity.
- **Model No. STW306**

ЗВЕДОГАЕЧЕН КЛЮЧ С ТРЕСЧОТКА И ЧУПЕЦА ГЛАВА

- Chrome Vanadium steel combination spanners with 72-tooth, WallDrive®, ratchet ring.
- Ultra smooth ratchet action requires only 5° rotation to pick up the next tooth.
- Flexible ring head is ideal for awkward applications.

Model No	размер	дължина
FHRCW08	8mm	137mm
FHRCW09	9mm	159mm
FHRCW10	10mm	159mm
FHRCW11	11mm	175mm
FHRCW12	12mm	175mm
FHRCW13	13mm	186mm
FHRCW14	14mm	194mm
FHRCW15	15mm	216mm
FHRCW16	16mm	216mm
FHRCW17	17mm	232mm
FHRCW18	18mm	250mm
FHRCW19	19mm	250mm



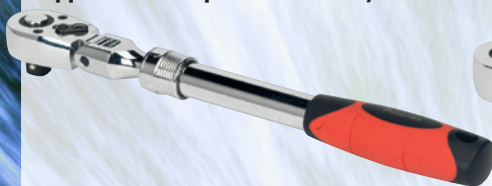
Individual Spanners

Flexible Head

8-19mm

Premier

ТРЕСЧОТКА С ЧУПЕЦА ГЛАВА, И УДЪЛЖАВАЩО СЕ РАМО 1/2



- Chrome Vanadium steel ratchet wrench.
- Hardened and tempered with a chrome plated mirror finish.
- Extension retained at set increments with a quick release locking ring giving six different shaft lengths.
- Features 180° flexi-head, flip reverse, spring-ball socket retention and soft grip handle.

• Model No. AK6682

1/2" Sq. Drive

72-Tooth

Extendable

Flexi-Head

Premier

ТРЕСЧОТКА 3/8 ,С ГЪВКАВА ГЛАВА И ДРЪЖКА, 72 ЗЪБА, 235MM



3/8" Sq. Drive

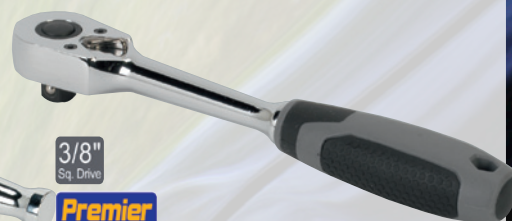
Premier

Flexi-Head & Handle

- Hardened and tempered Chrome Vanadium steel ratchet wrench with a fully polished mirror finish.
- Slim style contoured handle with pear-head design.
- 180° Flexi-head and handle offer increased access for hard to reach applications.
- Features flip reverse and quick release mechanism.

• Model No. AK673

РЕВЕРСИВНА ТРЕСЧОТКА, 3/8, 200MM ДЪЛЖИНА, 48 ЗЪБА



3/8" Sq. Drive

Premier

Gear2Gear

- Chrome Vanadium steel 48-tooth gear-to-gear ratchet wrench, hardened and tempered, with fully polished mirror chrome finish.
- Features pear-head with flip reverse, push-button quick release and bi-material handle with anti-slip comfort grip.

• Model No. AK8947

РАЗДВИЖЕН КЛЮЧ ФРЕНСКИ/ 150MM



150mm

Premier

- Drop-forged Chrome Vanadium steel with Ni-Fe finish.
- Precision jaws, hardened and heat treated to 40-50 HRC for durability and accurate contact with fastener.
- Spring based roller provides fast moving ratchet action.
- Strong handle design and anti-slip comfort grip aid use with greasy hands.
- Metric scale for simple adjustment to required size.
- Maximum Jaw Capacity: 20mm.

• Model No. AK9460

МАГНИТЕН ПРИХВАЩАЧ С LED СВЕТЛИНА

LED

Premier

1.3kg PICK-UP



- Pick-up capable of lifting 1.3kg.
- Fitted with LED to illuminate poorly lit areas operated by an on/off switch mounted in handle.
- Supplied with batteries.

• Model No. AK6540

ДИНАМОМЕТРИЧНА ОТВЕРКА 2-10Nm, 1/4 K-T 34pc

Premier

2-10Nm

1/4" Sq. Drive

Hex

Star

Phillips

- Ideal for automotive applications replacement of airbag, crash sensor and inertia reel fixtures.
- Robust construction with easy-to-read window for precise torque setting.
- Textured, contoured handle for added grip and comfort.
- Contents: Bits; Phillips - #0, #1 x 2, #2 x 3, #3 x 2, Slotted - 3, 4, 5, 6, 7mm, Hex - 2, 2.5, 3, 4, 5, 6mm, Pozzi - #1 x 2, #2 x 3, #3 x 2, TRX-Star* - T10, T15, T20, T25, T30, T40, 1/4" Sq Drive Torque Driver, 1/4" Sq x 6mm Hex Adaptor.

• Model No. STS100

ЗВЕДОГАЕЧЕН КЛЮЧ С ТРЕСЧОТКА

- Chrome Vanadium steel combination spanners with 72-tooth, WallDrive®, ratchet ring.
- Ultra smooth ratchet action requires only 5° rotation to pick up the next tooth.
- Ideal for awkward applications.



6-32mm

Premier

Individual Spanners



Model No	размер	дължина
RCW06	6mm	139mm
RCW07	7mm	139mm
RCW08	8mm	146mm
RCW10	10mm	165mm
RCW11	11mm	171mm
RCW12	12mm	177mm
RCW13	13mm	184mm
RCW14	14mm	197mm
RCW15	15mm	203mm
RCW16	16mm	211mm
RCW17	17mm	230mm
RCW18	18mm	242mm
RCW19	19mm	253mm
RCW21	21mm	275mm
RCW22	22mm	286mm
RCW24	24mm	298mm
RCW27	27mm	330mm
RCW30	30mm	422mm
RCW32	32mm	424mm

**КОМПЛЕКТ
НАКРАЙНИЦИ, 2 БРОЯ,
1/4, 45 И 90 ГРАДУСА**



- Smoothly operating drive rods transmit torque through 45°/90° angles.
- Polished mirror finish with knurled ring for extra grip with oily fingers.
- **Model No. AK2720**

**КОМПЛЕКТ КАМЪНИ
TOTAL DRIVE® 1/2: 10,
12, 13, 14, 15, 16, 17, 18,
19, 21, 22, 24MM**



- Can be used on a wide range of fasteners.
- All are suitable for Spline, Metric Hex and Bi-Hex, with many also equivalent to TRX-Star®, Whitworth, Imperial Hex and Imperial Bi-Hex.
- Sizes: 10, 12, 13, 14, 15, 16, 17, 18, 19, 21, 22, 24mm.
- **Model No. AK70612**

**КОМПЛЕКТ ЦВЕТНИ
ГАЕЧНИ КЛЮЧОВЕ, 14
БРОЯ**



- Drop-forged Chrome Vanadium steel combination spanners.
- Chrome plated for corrosion resistance.
- Sizes: 6, 7, 8, 9, 10, 11, 12, 13, 14, 15, 16, 17, 18, 19mm.
- WallDrive® rings.
- **Model No. AK6314**

**ДИНАМОМЕТРИЧЕН
КЛЮЧ 3/8, 370MM,
7-112NM**



- Range: 7-112Nm/5-83lb.ft.
- Chrome Vanadium steel ratchet head with smooth action mechanism.
- Scales graduated in both Nm and lb.in/ lb.ft.
- Wrenches are individually tested to standards with ±4% accuracy and each wrench is issued with an individually numbered test certificate.
- **Model No. STW1011**

РЕФРАКТОМЕТЪР



- Accurately measures the strength of battery fluid, screenwash and antifreeze by measuring the refractive index of light passing through the mixture.
- Suitable for synthetic antifreeze mixtures including long life OAT (Organic Acid Technology).
- Temperature corrected prism ensures accuracy.
- Eyepiece with adjustable focus.
- Supplied with pipette and carry-case.
- **Model No. VS005**

**ТЕСТЕР ЗА ОХЛАДИТЕЛНА
ТЕЧНОСТ**



- Tests ethylene glycol strength with engine hot or cold.
- Composite body and rubber bulb for workshop durability.
- **Model No. AK409**

СТЕТОСКОП



- Quickly locates the source of engine noise such as piston slap, worn gears and bearings, damaged valves, water pump failure and blown gaskets and even dash board squeaks.
- Plastic ear pieces and 300mm probe with sound amplifying chamber.
- **Model No. AK871**

**ТЕСТЕР ЗА АКУМУЛАТОРИ,
ПРОВЕРКА НА СЪСТОЯНИЕТО НА
АКУМУЛАТОРА**



- American style drop tester.
- Load applied by internal switchgear - no sparking!
- Suitable for 6 and 12V batteries.
- Applies load across cells and measures output on meter.
- Accurate indication of battery voltage, faulty cell and short circuited cell.
- **Model No. BT917**

**К-Т ЗА СВАЛЯНЕ НА ШАЙБАТА НА
АЛТЕРНАТОРА,
13 БРОЯ**



- Easy removal of freewheel pulley from alternator either on or off the vehicle.
- Allows alternator shaft to be held while the pulley retainer is removed.
- Applications: Alfa Romeo, Audi, BMW, Citroen, Fiat, Mercedes, Mitsubishi, Renault, Seat, Skoda, Vauxhall/ Opel, VW, Volvo.
- **Model No. SX401**

**УРЕД ЗА ИЗМЕРВАНЕ НА
ПРЕКЪСНАТИ ВЕРИГИ 3-48V**



- Tests electrical circuits from 3 to 48V DC.
- Integral, spring loaded, pointed probe for testing through insulation.
- Twin LEDs indicate live circuit and polarity.
- 0.9mtr Cable with insulated crocodile earth clamp.
- **Model No. AK4051**

**ТЕСТЕР ЗА АКУМУЛАТОР С
MEMORY SAVER**



- Memory Master attaches to a 12V slave battery and provides power via the cigarette lighter socket to on-board electronics whilst vehicle's own battery is disconnected.
- Also provides a quick check of the battery's condition with a digital voltage display.
- Supplied with 1.3mtr cable and crocodile clips.
- **Model No. VS207**

**КОМПЛЕКТ ЗА ДЕМОНТАЖ НА
АВТО РАДИОКАСЕТОФНИ**



- Updated comprehensive set of tools for authorised release and removal of in-car entertainment units on popular vehicles.
- **Model No. VS8047**

КОМПЛЕКТ КЛЕМИ



- Allows a wire to be connected into the electrical circuit.
- Two piece design allows the second wire to be disconnected if required.
- Sizes: Splice 0.5-1.0mm, Connector 0.5-1.5mm.
- **Model No. WTR50**

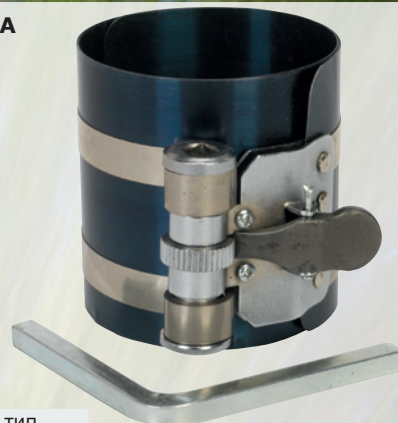
КОМПЛЕКТ ЗА ОТВИВАНЕ НА ИСКРОВИ ПОДГРЕВНИ СВЕЩИ И ЛАМБДА СОНДИ, 3/8

- Forged Chrome Vanadium master service set for the professional.
- Includes all the sockets and extensions required to remove/install spark/glow plugs and oxygen sensors on most modern vehicles.
- Supplied in storage case.
- **Model No. AK6562**



МУФА ЗА СВИВАНЕ НА БУТАЛНИ ПРЪСТЕНИ 75MM, Ø53-125MM

- Quality construction with sprung steel wraps and ratchet action tension mechanism.
- Supplied with steel key.



Model No.	ширина	тип
VS155	75mm	Ø60-125mm
VS156	75mm	Ø60-175mm
VS157	100mm	Ø60-150mm

КОМПЛЕКТ ЗАМБИ, 10 ЧАСТИ

- Carbon steel body with spring loaded centring pin.
- Suitable for cutting gasket material or cork, leather etc.
- Supplied in storage case with nine dies.
- **Model No. AK709**



К-Т ЗА ПОЧИСТВАНЕ НА ДИЗЕЛОВИ ИНЖЕКТОРИ, 6 ЧАСТИ

- Set of five diesel injector seat cleaners, centring pilot and T-handle.
- Used to clean/decarbonise injector seats when changing injectors.
- Helps to avoid blow-back due to poorly seated injectors.
- Suitable for a wide range of vehicles.
- **Model No. VS2055**



РЪЧНА ГПП ЗА ДИЗЕЛ И БЕНЗИН

- Required for priming injection pump.
- Use after diesel filter change, drainage of fuel tank or any other disturbance of the fuel system.
- Supplied with two fuel pipe clips.
- Suitable for 9mm bore hose.
- **Model No. VSE055**



О-ПРЪСТЕНИ, 225 БР

- Rubber O-ring assortment in popular sizes.
- Partitioned case.
- **Model No. BOR225**



О-ПРЪСТЕНИ, 419 БР

- Manufactured from Buna-N.
- Suitable for personal & professional workshops, garages and plumbing.
- Supplied in partitioned interspaced case.
- **Model No. BOR419**



КОМПЛЕКТ КЛЕМИ

- Fast, simple and strong splicing of electrical wires.
- Easy-to-use, no wire strippers or crimpers required.
- Includes two sizes.
- AWG/Colour: 22-18/Red, 18-14/Blue.
- **Model No. QSS50**



КОМПЛЕКТ ПРОБКИ И ДИФТУНГИ

- Assortment of alloy washers and sump plugs ideal for everyday use within a busy workshop.
- Sump Plugs: M10 x 1.0, M12 x 1.5, M13 x 1.5, M14 x 1.5, M15 x 1.5, M16 x 1.5, M18 x 1.5, M20 x 1.5mm.
- **Model No. VS663**



МАГНИТНО ПОКРИВАЛО ЗА КАЛНИК, 4 ДЖОБА

- Soft-faced vinyl material prevents scratching and marking of paintwork during servicing.
- Wing cover held in place by integral magnets.
- Four pockets for holding tools while working on car.
- Nominal Size: 1065 x 600mm.
- **Model No. VS856**



Premier
TOOLS NOT INCLUDED

КОМПЛЕКТ ЗА РАЗШИРЯВАНЕ И РЯЗАНЕ НА ТРЪБИ (МЕДНИ, АЛУМИНИЕВИ), 10 БРОЯ

- Includes screw-type tube cutter with die-cast frame and integral de-burring tool.
- Dies: 3/16", 1/4", 5/16", 3/8", 7/16", 1/2", 5/8".
- **Model No. AK506**

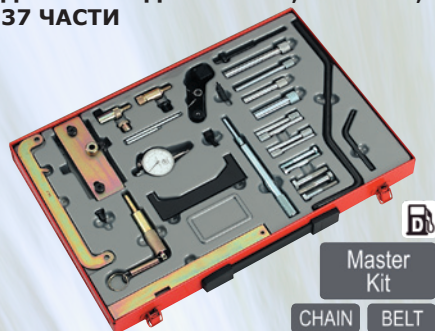


РАЗШИРИТЕЛ ЗА СПИРАЧНИ ЦИЛИНДЪРЧЕТА

- Chemically blackened steel spreader plates.
- An essential tool for retracting the brake piston to allow insertion of new brake pads.
- Suitable for most ATE, Bendix, Delco and Girling callipers.
- **Model No. AK711**



КОМПЛЕКТ ЗА ЗАКОНТЪРЯНЕ НА ДИЗЕЛОВИ ДВИГАТЕЛИ, ЕКСПЕРТ, 37 ЧАСТИ



Master Kit
CHAIN BELT

- Kit includes: VS101, VS102, VS103, VS104, VS105, VS106, VS107, VS108, VS109, VS110, AK9634M.
- **Model No. VS100**

Инструмент за монтаж на заден мост на Audi A3, VW Bora, Golf IV



- Suitable for in situ installation of rear axle mounting bushes on selected VW and Audi vehicles.
- Use with ratchet wrench or spanner to insert composite bushes.
- Supplied in storage case.
- Applications: Audi: A3, VW; Bora, Golf IV.
- **Model No. VS722**

УНИВЕРСАЛЕН ИНСТРУМЕНТ ЗА ФИКСИРАНЕ НА СЪЕДИНИТЕЛ

- Nylon components with steel main shaft.
- Fits 90% of cars and light vans up to 5tonne gross (not suitable for Minis (A Series) or vehicles with double plate clutches).
- Suitable for front wheel drive vehicles.
- Supplied with 2 different sized expanding collets.
- **Model No. VS010**



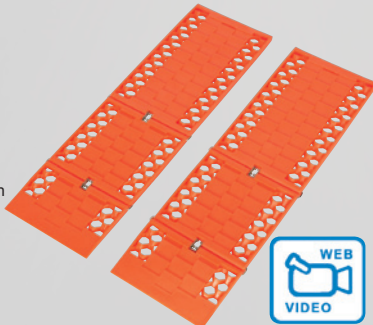
КОМПЛЕКТ ЗА ФИКСИРАНЕ НА СЪЕДИНИТЕЛ

- Necessary for pre-tensioning self adjusting clutches before removal or installation.
- Prevents plate distortion which may prevent the clutch from disengaging or cause dragging.
- Features a refitting tool, allowing the clutch adjuster to be wound back, and six alignment adaptors.
- Supplied in carry-case.
- **Model No. VS011A**



Комплект плоскости за гумите при затыване в кал, сняг, пясък

- Designed to prevent wheels spinning on snow, sand and mud.
- Manufactured from heavy-duty plastic with metal hinges for grip on uneven surfaces.
- Honeycomb cleats provide maximum grip in hard to get out of places.
- Size (L x W): 600 x 180mm.
- **Model No. VTR01**

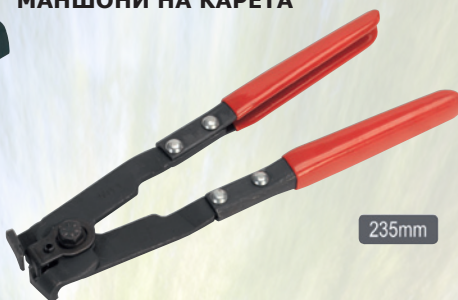


КОМПЛЕКТ ВИЛИЦИ ЗА ЯБЪЛКОВИДНИ БОЛТОВЕ(5 БР)



- Three forks with interchangeable shafts for use with ball peen hammer or air hammer with .401" shanks.
- Suitable for most small cars and light commercials.
- **Model No. AK273**

КЛЕЩИ ЗА СВИВАНЕ НА СКОБИ ЗА МАНШОНИ НА КАРЕТА



235mm

- Formed steel arms with insulated vinyl handles.
- Suitable for ear-type hose clips found on fuel, cooling system and vacuum hoses.
- Also used for securing CVJ boot clips.
- **Model No. VS1633**

КОМПЛЕКТ ЗА ДЕМОНТАЖ НА ЛАГЕРИ ЗА ГЛАВИНА



- Comprehensive kit of tools for the fast and effective removal and installation of wheel bearings on front-wheel drive vehicles.
- Heavy-duty steel drifts with phosphate coating to prevent corrosion.
- **Model No. VS7020**

НАКРАЙНИЦИ, ДЪЛБОКИ, 1/2, 3 БРОЯ



Deep

1/2" Sq. Drive



- Anodized Chrome Molybdenum 1/2" Sq drive sockets.
- Suitable for use with impact tools.
- Features nylon sleeve and insert to prevent damage to alloy wheels.
- Comprises deep 17, 19 and 21mm 1/2" Sq drive sockets, plus spare nylon sleeves.
- **Model No. SX031D**

КУТИЯ С ИНСТРУМЕНТИ, БЕЗ ОБОРУДВАНЕ, НЕРЪЖДАЕМА СТОМАНА, РАЗМЕРИ: 505 X245X225

- Heavy-duty stainless steel toolbox with integral composite tote tray.
- Soft grip carry handle for added comfort.
- Includes padlock eye for extra security.
- Size (W x D x H): 505 x 245 x 225mm.
- **Model No. AP505S**



STAINLESS STEEL

НЕОБОРУДВАНА КОЛИЧКА, 2 КРИЛА, 2 ЧЕКМЕДЖЕТА

- Use as part of a complete professional garage storage system or an individual storage unit.
- Featuring two silver-grey drawers with 35mm ball bearing runners, two doors, two fixed and two locking castor wheels.
- Added security provided by cylinder lock and supplied with two keys.
- All steel construction with a graphite powder coat finish and moulded composite bumpers for light damage protection.
- Overall Size (W x D x H): 710 x 360 x 838mm.
- **Model No. AP22DFC**



Ball Bearing
Drawer Slides

ВЛОЖКА 1/2

- Cold-forged Chrome Vanadium steel sockets.
- Hardened and tempered for added strength.
- Chrome plated and mirror finished.
- WallDrive® socket configuration.



Standard



Deep

1/2"
Sq. Drive

MM

6pt
WallDrive®

Siegen
tools

Model No.	ширина	тип
S0648	10mm	Standard
S0649	11mm	Standard
S0650	12mm	Standard
S0651	13mm	Standard
S0652	14mm	Standard
S0653	15mm	Standard
S0654	16mm	Standard
S0655	17mm	Standard
S0656	18mm	Standard
S0657	19mm	Standard
S0658	21mm	Standard
S0659	22mm	Standard
S0660	23mm	Standard
S0661	24mm	Standard
S0662	26mm	Standard
S0663	27mm	Standard
S0664	30mm	Standard
S0665	32mm	Standard
S0666	10mm	Deep
S0667	11mm	Deep
S0668	12mm	Deep
S0669	13mm	Deep
S0670	14mm	Deep
S0671	15mm	Deep
S0672	16mm	Deep
S0673	17mm	Deep
S0674	18mm	Deep
S0675	19mm	Deep
S0676	21mm	Deep
S0677	22mm	Deep
S0678	23mm	Deep
S0679	24mm	Deep
S0680	26mm	Deep
S0681	27mm	Deep
S0682	30mm	Deep
S0683	32mm	Deep

ВЛОЖКА 3/8

- Cold-forged Chrome Vanadium steel sockets.
- Hardened and tempered for added strength.
- Chrome plated and mirror finished.
- WallDrive® socket configuration.

• Model No. S0597



Standard



Deep

3/8"
Sq. Drive

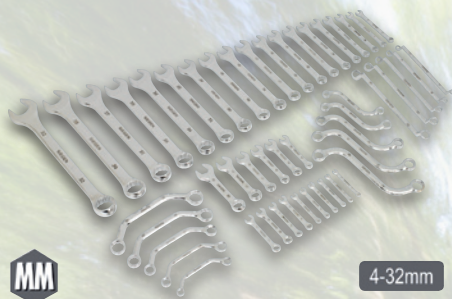
MM

6pt
WallDrive®

Siegen
tools

Model No.	ширина	тип
S0576	8mm	Standard
S0577	10mm	Standard
S0578	11mm	Standard
S0579	12mm	Standard
S0580	13mm	Standard
S0581	14mm	Standard
S0582	15mm	Standard
S0583	16mm	Standard
S0584	17mm	Standard
S0585	18mm	Standard
S0586	19mm	Standard
S0587	8mm	Deep
S0588	10mm	Deep
S0589	11mm	Deep
S0590	12mm	Deep
S0591	13mm	Deep
S0592	14mm	Deep
S0593	15mm	Deep
S0594	16mm	Deep
S0595	17mm	Deep
S0596	18mm	Deep
S0597	19mm	Deep

КОМПЛЕКТ ЗЕДОГАЕЧНИ КЛЮЧОВЕ, 50 БРОЯ



MM

4-32mm



Siegen
tools

- Contents: 19 x Combination Spanners; 8-32mm, 5 x Offset Ring Spanners; 6-15mm, 10 x Mini Combination Spanners; 4-11mm, 6 x Combination Stubby Spanners; 10-19mm, 5 x Double End Half-Moon Spanners; 8-22mm, 5 x S-Spanners; 10-19mm.

• Model No. S0565

НАКРАЙНИЦИ, 100 БРОЯ



Siegen
tools

- Contents: Bits; Security TRX-Star* (9pc), TRX-Star* (9pc), Hex - Metric (9pc), Hex - Imperial (9pc), Flat Screwdriver (9pc), Pozzi Screwdriver (8pc), Phillips Screwdriver (8pc), Security Hex - Metric (6pc), Security Hex - Imperial (6pc), Tri-Wing (4pc), Square (4pc), Spanner (4pc), Torq (3pc), Spline (3pc), Butterfly (3pc), Special Hook Bit, Magnetic Extension/Bit Holder, 1/4" Sq Drive Extension, 1/4" Sq Drive Socket Adaptor (2pc).

• Model No. S0473

ЛЕГЕН ЗА АНТИФРИЗ 17Л



17ltr

- Made from high density Polyethylene with UV stabilisers.
- Suitable for antifreeze changes.
- Features anti-splash lip that contains fluid when carrying or pouring.
- Large handles and enclosed pouring spout aids return of oil/fluid to recycling container.
- Colour coded to help keep different fluids isolated and reduces cross contamination.

• Model No. DRP04

РОТАЦИОННА ПОМПА ЗА ВАРЕЛИ (С ВКЛЮЧЕН АДАПТОР ЗА ГОЛЕМИ ВАРЕЛИ)



- Fits most 205ltr drums.
- For use with oils and other non-corrosive fluids with similar viscosity.
- Delivery: 0.2ltr/revolution.

• Model No. TP55

МУЛТИФУНКЦИОНАЛНА ПОМПА, 1 ЛИТР

- Multi-purpose pump perfect for topping up difficult to access points on motor vehicles, lawnmowers, chainsaws and other jobs around the workshop and home.
- One litre capacity.
- Suitable for all engine oils, transmission fluids, brake fluids and general purpose cleaners.

• Model No. TP6804



ПНЕВМАТИЧЕН ДОЗАТОР ЗА ГРЕСИ, (ГРЕСЪОРКА), ВМЕСТИМОСТ: 400Г.



- Die-cast head and body with chromed steel grease tube.
- Includes rigid extension tube and 4-jaw coupler.
- Trigger operated continuous flow gun with 3-way fill and air-bleed valve.
- Accepts 400g grease cartridges, bulk or manual fill.
- Delivers at a pressure from 1200-5000psi.

• Model No. SA401

ПИСТОЛЕТ ЗА ГРЕС



- 3-Way fill with cartridge, bulk or manual capability.
- Supplied with rigid delivery tube and push-on hydraulic 4-jaw coupling.
- Contoured pump handle.
- Accepts standard 400g cartridges.

• Model No. AK445

ПРЕДПАЗНИ ОЧИЛА С БЕЗЦВЕТНИ СЪКЛА



- BS EN 166/F - Lightweight spectacles.
- Ideal as jobber's or visitor's spectacles.
- Side arms with built-in ventilated shields.
- **Model No. SSP29**

ПОМОЩНО СТРАНИЧНО ОГЛЕДАЛО



- Easy to adjust, both horizontally and vertically.
- It is a legal requirement to fit an extension mirror when a caravan or trailer obstructs the towing vehicle's vision.
- Full EU approval.
- **Model No. TB63**

НЕОНОВА ЛАМПА С КУКА, 11W, 230V, 5 МЕТРА КАБЕЛ



- 11W neon lead lamp produces as much light as a 60W incandescent bulb.
- Swivel hook for easy positioning.
- High output energy saving tube with enhanced light output while retaining a compact size and low power consumption.
- Cable Length: 5mtr.
- **Model No. ML11**

КОМПЛЕКТ МАЛКИ ТЕЛЕНИ ЧЕТКИ, 3 БРОЯ



- Composite stocked brush set with hanging location holes.
- Steel, nylon and brass filled heads.
- Suitable for cleaning spark plugs and smaller engineering components.
- **Model No. AK9791**

КОМПЛЕКТ КУФАРЧЕ С НАКРАЙНИЦИ, 1/2, 10БР



- WallDrive® sockets selected on DuoMetric® principle.
- Sizes: 9, 10, 11, 13, 14, 17, 19, 22, 24, 27mm.
- **Model No. AK56/11M**

АДАПТЕР 1/2



- Chrome Molybdenum steel with phosphate finish for added corrosion resistance.
- **Model No. AK5500**

КОМПЛЕКТ ПНЕВМАТИЧНИ ИНСТРУМЕНТИ ЗБР. С АКСЕСОАРИ



- 1/2" Sq Drive Air Impact Wrench and Air Ratchet Wrench with 10mm Reversible Air Drill in a carry-case.
- Includes set of 1/2" Sq drive WallDrive® Chrome Vanadium impact sockets and in-line air oiler.
- Suitable for workshop and bodyshop applications.
- **Model No. SA2003KIT**

ПНЕВМАТИЧНА ТРЕСЧОТКА (1/2)



- Supplied with air regulator for four-speed control.
- Supplied with WallDrive® impact sockets, extension bars and driver bits.
- **Model No. GSA21KIT**

ИНСТРУМЕНТ ЗА НАСТРОЙКА НА МОТОЦИКЛЕТНИ АНГРЕНАЖНИ ВЕРИГИ



- Supplied with 12-tooth 1/4" Sq drive ratchet and 8mm Chrome Vanadium socket.
- **Model No. MS017**

БРОЯ ВИСОКИ ПОДПОРИ, ПО 4ТОНА ВСЯКА, (ОБЩО 8ТОНА)

- British made all steel stand with pin and chain load support.
- Full width V-crotch for safe support of load.
- Min./Max. Height: 1195/1865mm.
- Manufactured in the UK, to rigorous safety standards.
- **Model No. AS4000H**



High Lift
4tonne

ВИСОКА ПОДПОРА 750КГ

- Screw adjustment with easy-to-use spinner nut.
- Ball bearing thrust race for smooth operation.
- Removable base for easier storage.
- Min. Height: 1390mm.
- Max. Height: 2060mm.
- **Model No. ES750**



750kg

БАЛАНСАТОР ЗА МОТОЦИКЛЕТНИ ГУМИ



- Professional motorcycle wheel balancer.
- Suitable for most motorcycle wheels.
- Includes two cones and spindle for precise, easy alignment and balancing.
- Uses gravity to find the heavy point of a wheel and tyre.
- **Model No. VS1819**

КРИК, 2 ТОНА

- Min./Max. Saddle Height: 135/340mm.
- Chassis Length: 450mm.
- Steel chassis with welded castor supports and one-piece hydraulic unit.
- Fitted with overload valve and finger cover for extra safety.
- Suitable for the hobby user or as an emergency mobile jack.
- Includes one-piece pumping handle and carry handle.
- **Model No. 1050CX**



2tonne



ГРЕС EP2, 400г

- Multi-purpose EP2 grease cartridge suitable for use with all Sealey brand grease guns.
- Lithium grease ideal for a wide range of applications.
- **Model No. SGC1**



ВЪЗДУШЕН ГАЙКОВЕРТ 1/2, МАКС.ВЪРТЯЩ ОБЕМ, :652NM



Premier

Twin
Hammer

1/2"
Sq. Drive

- Working/Maximum Torque: 400lb.ft(544Nm)/480lb.ft(653Nm).
- Ultimate Torque: 500lb.ft(680Nm).
- Powerful impact wrench with twin hammer mechanism for increased torque.
- Air motor features quality bearings, ductile steel end plates and carefully finished components to ensure smooth running and maximum power.
- Combination forward/reverse and speed selector.
- Suitable for heavy tyre shop use.
- **Model No. SA602**

КОМПЛЕКТ ЗА ВКАРВАНЕ И ЗАВИНТВАНЕ НА СПИРАЧНИТЕ БУТАЛА, С ВЪЗДУХ, 26БР



Air Operated

29pc

- Applications; Alfa Romeo, Audi, BMW, Citroen, Fiat, Ford, Honda, Jaguar, Lancia, Lincoln, Mazda, Mini, Mitsubishi, Nissan, Peugeot, Proton, Renault, Rover, Saab, Seat, Subaru, Toyota, Vauxhall/Opel, VW, Volvo.
- **Model No. VS0286**

ХИДРАВЛИЧНА ПРЕСА ЗА СВИВАНЕ НА ПРУЖИНИ, 1500КГ



Hydraulic

1500kg

ПНЕВМАТИЧНА ПРЕСА ЗА СВИВАНЕ НА ПРУЖИНИ 1500КГ



Air Hydraulic

- Quicker and easier than using ratchet driven spring compressor.
- Plastic coated yokes reduce the risk of spring slippage/damage.

Model No.	пневматика	тонаж	диаметър на пружината
RE231	No	1500kg	Ø102mm to Ø160mm.
RE232	Yes	1500kg	Ø102mm to Ø160mm.

ЗАРЯДНО ЗА АКУМУЛАТОРИ, 12АМП, 6/12V, 230V

- 12Amp, 6V/12V Output.
- Compact electronic battery charger with pressed steel casing and carry handle.
- Intelligent charge control, selectable 6V or 12V and slow or fast output are perfect for long-term maintenance of batteries on irregularly or seasonally-used vehicles.
- Suitable for lead acid or low maintenance batteries.
- Reverse polarity protection prevents inadvertent damage to charger.
- LED display confirms charger status.
- Analogue ammeter shows charging current.
- Can be connected to a battery for an indefinite period - the intelligent circuitry constantly monitoring the voltage and maintaining the charge level at optimum.
- **Model No. AUTOCHARGE12**



12A

6V / 12V

КОСЕР

АВТОЧАСТИ

Верига магазини:

Варна, бул. Сливница 189, тел.:052/ 504 903; 0885/ 999 664
 Варна, ул. Ал. Дякович 18, тел.: 052/ 613 530; 0889/ 500 995
 Варна, бул. Цар Освободител 124, тел.: 052/ 75 90 00, 0889/ 999685
 София, ул. Резбарска 9, 02/ 931 31 14, 832 61 35, 0886/ 262009, 0885/ 888021,0882/ 600252
 София, ул. Цар Симеон 178, тел.:02/ 931 31 14; 02/ 931 11 26; 0888/ 323251
 София, ул. Г. С. Раковски 27, тел.:02/ 931 41 88; 0886/ 262010
 София, бул. Сливница 357, тел.: 02/ 927 40 10; 0886/ 26 20 11
 София, бул. Бели Дунав, бл. 330, тел.:02/ 936 03 86; 0885/ 999661
 София, кв. Горубляне, ул. П. Красов 30, тел.:02/ 9737393; 0884/ 888591
 Пловдив, бул. Копривщица 19, тел.:032/ 670 470; 0888 646 468
 Пловдив, бул. Източен 137, тел.:032/632 707; 0886/262003
 Пловдив, бул. Кукленско шосе 28, тел.:032/ 640 061; 0882 300 246
 Бургас, ул. Индустриална 9, тел.:056/817 009; 815 201; 0887/629990
 Бургас, к-с Изгрев, бл. 121 /с-у бл.8/, тел.: 056/52 17 47; 0888/789395
 Стара Загора, Индустриална зона, тел.:042/62 11 05; 0886/262015
 Велико Търново, бул. България 41, тел.:062/600 832; 0887/825057
 Ямбол, ул. Д. Благоев 8, тел.:046/66 39 33; 0889/510710
 Русе, ул. Николаевска 40А, тел.:082/835 642; 834 642; 0886/434852
 Шумен, ул. Велики Преслав 9, тел.:054/831 465; 0889/307411
 Хасково, бул. България 15, тел.:038/66 33 51; 0889/510810
 Благоевград, бул. Св. Димитър Солунски 12, тел.:073/887 280; 0884/888 585

Габрово, ул. Орловска 87, тел.: 066/80 32 33; 0886/434851
 Добрич, бул. Добричка епопея 10, тел.: 058/60 20 80; 0886/197083
 Смолян, ул. Пролет 5, тел.: 0301/659 95; 0888/150940
 Враца, ул. Река Лева 1а, тел.: 092/66 05 13; 0888/789 305
 Сливен, кв. Дружба 87, тел.: 044/66 29 91; 0888789321; 0886900660
 Плевен, ул. Гренадерска 32, тел.: 064/805 645; 0885/888 027
 Пазарджик, бул. Стефан Стамболов 8, тел.: 034/44 49 49; 0886/197084
 Севлиево, ул. Митрополит Климент 11, тел.: 0675/35 999; 0885/888023
 Кърджали, ул. Тракия 8, тел.: 0361/6 77 46; 0885/888 029
 Разград, ул. Васил Левски 8, тел.:084/660 189; 0888/788 692
 Асеновград, ул. Княз Борис I 19, тел.:0331/6 37 38; 0885/999 037
 Казанлък, ул. Шипченска Епопея 17, тел.: 0431/6 23 87; 0885/999 495
 Търговище, ул. Отец Паисий 16, тел.: 0601/6 21 23; 0885/999 496
 Силистра, ул. Тутракан 1, тел.: 086/823 174; 0885/999 662
 Ловеч, ул. Шипка 1, тел.: 068/602 886; 0887/999 282
 Монтана, бул. Трети март 89, тел.: 096/314 250; 0882/300 208
 Перник, ул. Софийско шосе 104, тел.:076/605 165; 0884/888 593
 Сандански, ул. Стефан Стамболов 35А, тел.: 0746/329 85; 0884/ 888 580
 Гоце Делчев, ул. П.Яворов 13, тел.:0751/ 607 21; 0884/888 582
 Троян, ул. Ген. Карцов 123, тел.: 0670/541 48; 0882/288 804
 Видин, ул. Княз Дондуков 19, тел.: 094/600 386; 0882123084; 0882300235

КОСЕР АД НЕ НОСИ ОТГОВОРНОСТ ЗА ТЕХНИЧЕСКИ ГРЕШКИ И ПРОПУСКИ В НАСТОЯЩЕТО ИЗДАНИЕ. ПОВЕЧЕ ИНФОРМАЦИЯ ЗА ПРОДУКТИТЕ МОЖЕ ДА ПОЛУЧИТЕ В МАГАЗИНИТЕ ОТ ТЪРГОВСКАТА МРЕЖА НА КОСЕР АД.