



**FOR BIKE MANIACS**

**ELF MOTO NEW RANGE**



**ELF, THE MOTORCYCLE, SCOOTER AND  
QUAD LUBRICANTS SPECIALIST**



**BETTER UNDERSTANDING:  
MOTORCYCLE LUBRICANT TECHNOLOGIES**





**BETTER UNDERSTANDING:  
HOW A PRODUCT LABEL IS ORGANISED (front)**

**2-STROKE / 4-STROKE INDICATION**

2T (2-stroke): silver background / white text  
4T (4-stroke): white background / silver text

**MOTO OR SCOOTER VISUAL**

The illustration changes according to type of machine and utilization.

**MOTORCYCLE COLOUR**

The colour changes according to the lubricant technology:

- RED: 100% Synthetic and Synthetic Technology
- ORANGE: Synthetic based
- YELLOW: Mineral

**SCOOTER COLOUR**

- BLUE: All scooter lubricants

**VOLUME**

**TECHNOLOGY**

**PRODUCT NAME & GRADE**

**TECHNOLOGY SCALE**

We indicate the lubricant technology with a cursor system to help customers immediately identify the product within the range and to implicitly encourage upgrading.

**USE**

Reassurance: a “checkbox” system indicates the types of engines for which the lubricant is intended in order to inform and reassure end users.



**BETTER UNDERSTANDING:  
HOW A PRODUCT LABEL IS ORGANISED (Back)**



**MOTO OR SCOOTER VISUAL**

Front face visual

**PRODUCT NAME & GRADE**

**TECHNOLOGY SCALE**

**DESCRIPTION BY COUNTRY**

The colour of the country name abbreviations and separating lines change depending on the lubricant technology.

**PRODUCT SPECS**

**BAR CODE**

**ELF LUBRICANTS WEBSITE**

**JASO STANDARD PICTOGRAM**

The outline colour changes depending on the lubricant technology.

**VOLUME**

**INSIDE INFORMATION OPENING**

The background colour changes depending on the lubricant technology.

**HEAD OFFICE ADDRESS**





# 2-STROKE LUBRICANTS

## API / JASO / ISO labels informations for 2-stroke engines

**API \***  
performance level  
(engine performance)



**JASO \*\***  
performance level  
(gearbox performance)



**ISO \*\*\***  
performance level



**\* API :** The American Petroleum Institute established a classification of oils according to several criteria as the dispersive power, the detergence power, the wear resistance or anti-oxidation and anticorrosive protection power.  
The 2-stroke engine oils have to satisfy supplementary requirements: higher temperature resistance, gasoline solubility, to burn without loosening of smoke and without producing of deposits; they are sorted TA, TB and TC according to their performances.

**\*\* JASO :** It means Japanese Automotive Standard Organisation. The JASO attributes a JASO label after analysis of the oil. When a lubricant answers successfully to all tests, the Japanese Automotive Standard Organization awards a certificate and a number of accreditation.  
This number has to appear on the packaging in the form of a definite logo.

**\*\*\* ISO :** The ISO poposes an international project of specification, three categories being ISO-L-EGB, ISO-L-EGC and ISO-L-EGD in increasing order of requirement.

## MINERAL



### MOTO² SELF MIX

MOTO² SELF MIX was formulated based on mineral oils selected for 2-stroke engines. It guarantees easier cold starting and provides a multiple protection of your engine.

#### MINERAL OIL

API TC • JASO FB • ISO-L-EGB  
Pack: 1L, 4L, 60L



## SYNTHETIC BASED



### MOTO² OFF ROAD

MOTO² OFF ROAD is a new generation lubricant with a formula elaborated to ensure a greater engine protection and to reduce polluting emissions. Both economical and ecological, very reactive to variations in temperature and with optimized viscosity, MOTO² OFF ROAD will provide perfect hydrodynamic lubrication and boost engine speed very easily.

#### SYNTHETIC BASED OIL

API TC • JASO FD • ISO-L-EGD  
Pack: 1L, 60L, 208L



## 100% SYNTHETIC



### MOTO² TECH

MOTO² TECH is a new generation high-tech lubricant. Its revolutionary formula allows boosting engine power in the most extreme conditions and offers to all components of your motorcycle an optimal cleanliness thanks to the complex of detergent additives.

#### 100% SYNTHETIC OIL

API TC • JASO FD • ISO-L-EGD  
Pack: 1L, 208L



### MOTO² RACE

MOTO² RACE is a power elixir which acts as protective oil for all the vital parts of your motorcycle. A leading product with a very high performance competition formula to reduce friction and give enhanced engine protection. To get the most power out of your motorcycle.

#### 100% SYNTHETIC OIL - Base 100% Ester

Pack: 1L





**SYNTHETIC  
BASED**

## SCOOTER<sup>2</sup> STREET

SCOOTER<sup>2</sup> STREET is a new generation lubricant with a dynamic profile and an innovative formula allowing a remarkable reduction of exhaust emissions.

**SYNTHETIC BASED OIL**  
API TC • JASO FD • ISO-L-EGD  
Pack: 1 L



**MINERAL**

## SCOOTER<sup>2</sup> SELF MIX

SCOOTER<sup>2</sup> SELF MIX is a quality product offering an anti-deposit technology and reducing polluting emissions.

**MINERAL OIL**  
API TC • JASO FB • ISO-L-EGB  
Pack: 1 L



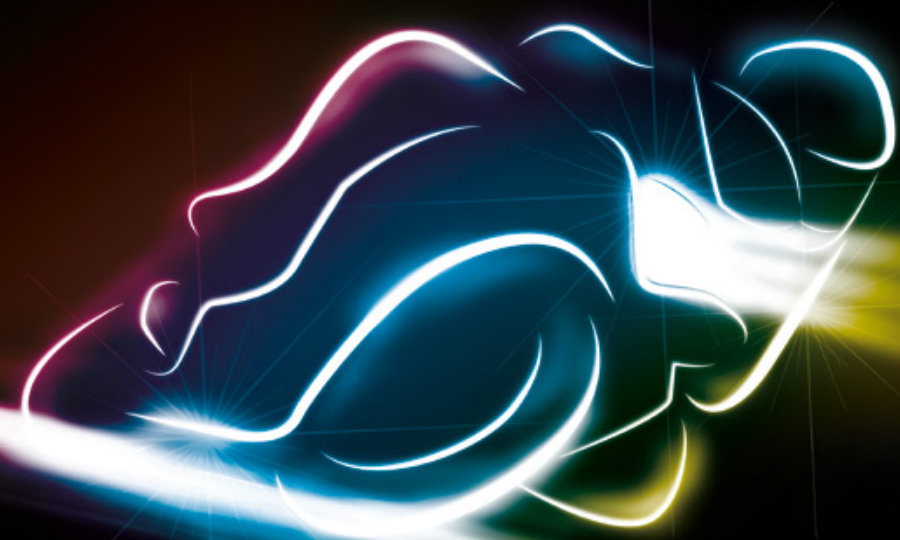
**100%  
SYNTHETIC**

## SCOOTER<sup>2</sup> STREET MAX

SCOOTER<sup>2</sup> STREET MAX is a top of the range lubricant formulated for demanding users, above all searching for an optimal driving efficiency and safe engine protection.

**100% SYNTHETIC OIL**  
API TC • JASO FD • ISO-L-EGD  
Pack: 1 L





# 4-STROKE LUBRICANTS

## API / JASO labels informations for 4-stroke engines

**API \***  
performance level  
(engine performance)



**JASO \*\***  
performance level  
(gearbox performance)



Circuit of lubrication on a separated gearbox

Circuit of lubrication on a unique gearbox

The ELF lubricant range benefits from the latest research and cutting edge technologies to guarantee engine protection, clutch performance and gearbox enhancement.

**\* API :** The American Petroleum Institute established a classification of oils according to several criteria as the dispersive power, the detergence power, the wear resistance or anti-oxidation and anticorrosive protection power. According to its performances, the oil inherits from a letter after the S (for Service): SA, SB... SH, SJ, SL. The more letter is taken away in the alphabet, the better are the performances!

**\*\* JASO :** It means Japanese Automotive Standard Organisation. The JASO attributes a JASO label after analysis of the oil. When a lubricant answers successfully to all tests, the Japanese Automotive Standard Organization awards a certificate and a number of accreditation. This number has to appear on the packaging in the form of a definite logo.





**“FOR THOSE WHO WANT TO RIDE  
CONFIDENTLY, THIS RANGE HAS BEEN  
DEVELOPED TO PROTECT THEIR  
MACHINES' MECHANICAL PARTS”**

**MINERAL**



### **MOTO<sup>4</sup> CRUISE**

**20W-50**

MOTO<sup>4</sup> CRUISE is formulated based on mineral oils selected for 4-stroke engines, guaranteeing engine multi-purpose protection.

#### **MINERAL OIL**

API SH • JASO MA2

Pack: 1 L, 4 L, 60 L, 208 L



**SYNTHETIC  
BASED**



### **MOTO<sup>4</sup> ROAD**

**10W-40**

MOTO<sup>4</sup> ROAD 10W-40 incorporates a clutch anti-slippage technology and gives superior performance in terms of lubrication. You will enjoy a more comfortable ride thanks to easier acceleration and a visible reduction in smoke emissions when starting.

#### **SYNTHETIC BASED OIL**

API SJ • JASO MA2

Pack: 1 L, 4 L, 60 L, 208 L



### **MOTO<sup>4</sup> ROAD**

**15W-50**

MOTO<sup>4</sup> ROAD 15W-50 incorporates a clutch anti-slip technology and gives superior performance in terms of lubrication. It enables higher resistance in harsh climatic conditions. You will enjoy driving comfort thanks to easier acceleration and a visible reduction in smoke emissions when starting.

#### **SYNTHETIC BASED OIL**

API SJ • JASO MA2

Pack: 1 L, 60 L, 208 L





## SYNTHETIC TECHNOLOGY



### MOTO 4 TECH

10W-50

MOTO 4 TECH is a new generation, high technology lubricant guaranteeing high endurance performance and improves the power of your engine. It guarantees an optimal cleanliness of all parts of the engine and ensures smooth and slick gear changes.

#### SYNTHETIC TECHNOLOGY OIL

API SL • JASO MA2

Pack: 1 L, 4 L, 60 L, 208 L



### MOTO 4 TWIN TECH

20W-60

MOTO 4 TWIN TECH is a totally new next-generation, very high-tech lubricant especially developed for twin engines, guaranteeing exceptional performance and improving engine protection. It guarantees optimal cleanliness of all engine parts and smooth gear changes.

#### SYNTHETIC TECHNOLOGY OIL

API SL • JASO MA2

Pack: 1 L, 4 L, 60 L, 208 L



## 100% SYNTHETIC



### MOTO 4 MAXI TECH

10W-30

- MOTO 4 MAXI TECH opens a new generation of Motorcycle engine oils, revealing outstanding skills:
- Up to 5% fuel economy (compared to a 10W-40 conventional oil)
  - Environment friendly, reduces exhaust (CO<sub>2</sub> & other Pollutants) emission
  - Superior protection against wear and deposits
  - Perfect and stable control of friction inside the wet clutch
  - Long-lasting properties, whatever the driving conditions.



#### SYNTHETIC TECHNOLOGY OIL

API SJ • JASO MA

Pack: 1 L, 208 L



### MOTO 4 RACE

10W-60

MOTO 4 RACE is conceived for highly sports conditions. Its very high quality formula will take you past your limits and boost performance of your engine.

USAGE: AMATEUR COMPETITION

#### 100% SYNTHETIC OIL

API SL • JASO MA2

Pack: 1 L, 4 L, 60 L, 208 L





**SYNTHETIC  
BASED**



**SYNTHETIC  
TECHNOLOGY**



## SCOOTER<sup>4</sup> CITY

10W-40

SCOOTER<sup>4</sup> CITY is a specific lubricant whose anti-wear formula guarantees optimum engine protection as well as a driving comfort.

### SYNTHETIC BASED OIL

API SJ

Pack: 1 L, 60 L



**EASIER COLD STARTING,  
FLEXIBLE AND HEAT RESISTANT.  
PRODUCTS SUITABLE FOR THE MOST  
DEMANDING 4-STROKE ENGINES.**

**SPECIFIC LUBRICANT  
GUARANTEEING OPTIMAL  
ENGINE PROTECTION AND  
A COMFORTABLE RIDE.**



## SCOOTER<sup>4</sup> MAXI CITY

5W-40

SCOOTER<sup>4</sup> MAXI CITY is customized to the most recent 4-stroke engines with reduced oil consumption and longer oil change intervals. Easier cold starting, high flexibility and heat resistance. Scooter 4 Fortissimo is up to the latest environmental standards and the technological evolutions.

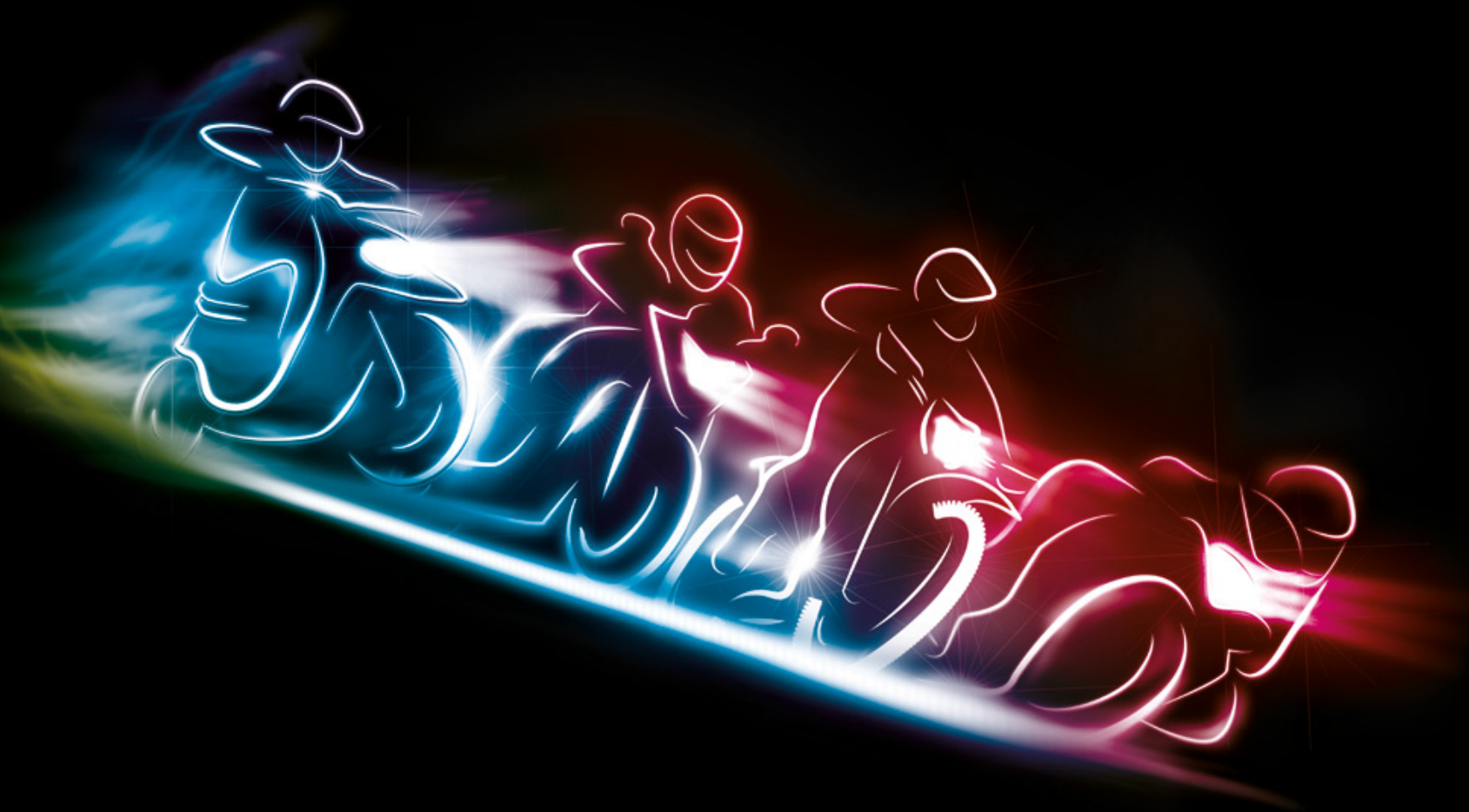
### SYNTHETIC TECHNOLOGY OIL

API SL

Pack: 1 L, 60 L, 208 L







“FOR MOTORCYCLE MANIACS,  
BIKE CARE IS A COMPLETE LINE  
OF PRODUCTS FOR MACHINE SERVICE,  
MAINTENANCE AND PROTECTION.”

**BIKE CARE**



## BIKE CARE

### MAINTENANCE

#### GEAR OIL



#### MOTO GEAR OIL 10W-40



MOTO GEAR OIL 10W-40 was specially developed for 2-stroke motorcycle gearboxes. It guarantees higher protection of gearboxes and optimum safety when changing gear.

**SYNTHETIC BASED OIL**  
API SJ  
Pack: 1 L



#### MOTO GEAR OIL 80W-90



MOTO GEAR OIL 80W-90 was specially developed for 4-stroke motorcycle gearboxes. It guarantees an optimal safety when changing gear.

**MINERAL OIL**  
API GL 5  
Pack: 1 L

#### FORK OIL



#### MOTO FORK OIL SYN 2,5W / 5W / 10W



MOTO FORK OIL SYN for forks and shock absorbers provides maximum safety even in harsh use. Suitable for road and off-road motorcycles.

**100% SYNTHETIC OIL**  
Pack: 0,5 L



#### MOTO FORK OIL 10W / 15W / 20W



MOTO FORK OIL for forks and shock absorbers. Provides optimum safety for the whole suspension system of road and off-road motorcycles.

**MINERAL OIL**  
Pack: 0,5 L

#### COOLANT



#### MOTO COOLANT ORGANIC

MOTO COOLANT ORGANIC is 100% organic coolant with an exceptional anti-corrosion property for light alloy circuits. Anti-freeze protection of all cooling system components up to -26°C. Non-aggressive.

**ORGANIC**  
AFNOR NFR 15-601, ATSM D3306, BS 6580  
Pack: 1 L



#### MOTO COOLANT MINERAL

MOTO COOLANT MINERAL is a mineral coolant. Optimum protection of circuits, prevents casing corrosion for prolonged engine life. Anti-freeze protection up to -26°C. Does not attack paint in case of contact.

**MINERAL**  
AFNOR NFR 15-601, BS 6580  
Pack: 1 L

#### BRAKE FLUID



#### MOTO BRAKE FLUID DOT 5,1

MOTO BRAKE FLUID DOT 5.1 is a very high-performance synthetic brake fluid. Silicon-free, for all braking systems, it provides optimum safety. Miscible with all other chemical synthetic fluids of the DOT3, DOT4 and DOT 5.1 type with the exception of silicon DOT 5 fluids and special fluids of the LHM type.

**100% SYNTHETIC**  
FMVSS 116 DOT 5.1  
Pack: 250 ml, 500 ml



#### MOTO BRAKE FLUID DOT 4

MOTO BRAKE FLUID DOT 4 is a high-performance brake fluid. Stable and incompressible at all temperatures, it provides optimum safety. Miscible with all other chemical synthetic fluids of the DOT3, DOT4 and DOT 5.1 type with the exception of silicon DOT 5 fluids and special fluids of the LHM type.

**100% SYNTHETIC**  
FMVSS 166 DOT 4  
Pack: 500 ml

#### PROTECTION



#### MOTO AIR FILTER OIL

MOTO AIR FILTER OIL is a foam air filter penetrating oil specially developed to reduce the risk of breakdown and to prolong engine life.

**BLUE COLOR**  
Pack: 1 L

## BIKE CARE

### SERVICE

#### DEGREASANT



#### 6 IN 1 MULTI LUBRICANT

6 IN 1 MULTI LUBRICANT is a multi-purpose aerosol. Lubricates, cleans and protects all the vital components of your motorcycle.

Pack: 400 ml



#### N CONTACT

N CONTACT is a dry cleaner for brakes, carburetors, plugs, metal surfaces. Degreases and multi-purpose cleaner for all motorcycle parts. Degreases quickly and leaves no residue. Practical spray to reach the most inaccessible places. Pressure jet to remove the most stubborn dirt.

Pack: 400 ml

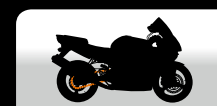
#### CHAINS



#### MOTO CHAIN LUBE

MOTO CHAIN LUBE is a very high-performance grease for transmission chains. Its formula was specially developed to provide optimum lubrication under the harshest running conditions. Successfully tested during motorcycle grand prix and rally-raids. Leave dry thoroughly.

**ORGANIC**  
Pack: 400 ml



#### MOTO CHAIN PASTE

MOTO CHAIN PASTE is a new generation extreme-pressure grease for motorcycle chains. Waterproof, provides exceptional lubrication under the harshest driving conditions. To spread with a brush.

**ORGANIC**  
Pack: 250 ml

#### CARE



#### MOTO SHAMPOO

MOTO SHAMPOO is a ready-to-use concentrated shampoo with protective wax to wash and shine all the parts of your motorcycle. Efficiently removes all greasy marks and residue from fairings, engines, sensitive parts, wheels and rims. Leave no marks when dry. Non-aggressive.

**SHAMPOING**  
Pack: 400 ml



#### MOTO POLISH

MOTO POLISH is a polishing cream conceived to remove micro-scratches and revive all painted surfaces and fairings. Removes all traces of dirt, in particular stubborn insect traces. Prevents paintwork corrosion due to the complex of protective additives.

**CREAM**  
Pack: 400 ml



MOTO 2T



SCOOTER 2T



MOTO 4T



SCOOTER 4T







**TOTAL Lubrifiants**  
562 avenue du Parc de l'Île  
92029 Nanterre Cedex  
**[www.elfmoto.com](http://www.elfmoto.com)**

