

Good tips for arriving safely.

Check the tyres regularly for punctures, cuts, splits and blisters.

Check the air pressure once a fortnight and especially before long journeys.

Never let the air out of warm tyres.

Before long journeys, check the air pressure of the spare wheel.

Remember to put on the valve caps.

Never let your tyres wear down to the minimum legal limit of 1.6 mm.

Summer tyres should be replaced when the tread depth is 3 mm.



Your local dealer.

Further information can be obtained from
www.continental-tyres.com

While quality drives you, safety drives us.

Summer tyres from
Continental.



We haven't reinvented the wheel. We just made it safer.

Years of experience and innovative quality made in Germany.

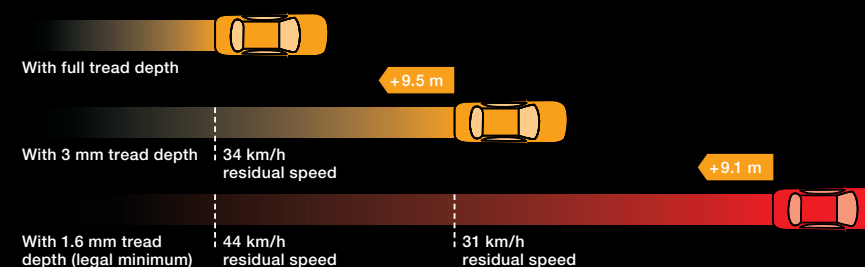
As one of the world's leading manufacturers of tyres and suppliers to the automobile industry, Continental feels a traditional sense of obligation towards significantly and sustainably driving automotive progress. Established in Hanover in 1871, today more than 160,000 highly qualified employees in 46 locations are working to ensure that your mobility is more comfortable, more sustainable and safer. Numerous innovations, our experience and close collaboration with leading automobile manufacturers provide the basis for decisively helping to shape future trends in the automobile industry. It's with good reason that premium tyres from Continental are regularly rated as 'highly recommended' in independent tests.



Take no risks when it comes to your tread.

Less isn't always more*:

If tyre tread depth is less than 3 mm, the braking distance will be considerably lengthened and the danger of aquaplaning quadrupled.



Aquaplaning due to insufficient tread depth.

Aquaplaning occurs when the tyre loses contact with the road during wet driving situations and starts to float uncontrollably.



8 mm of tread depth
Sufficient tyre tread

- Tyre maintains contact with the road



3 mm of tread depth
Low tyre tread

- Water wedge pushes between tyre and road
- Extension of braking distance



1.6 mm of tread depth
Insufficient tyre tread

- Water wedge under tyre prevents contact with the road
- Significant extension of braking distance

The causes.

Heavy rain, driving too fast and insufficient tread depth are the main causes of aquaplaning. Check regularly to ensure that you have sufficient tread depth, because this guarantees optimal water displacement between tyre and road surface – and minimises the risk of aquaplaning.

Source: Continental Reifen Deutschland GmbH, www.continental-reifen.de

*Braking in the wet from 80 km/h to a halt. The braking differences given here are based on a Mercedes C-Class car with a tyre size 205/55 R 16 V in over 1,000 braking tests. The graphics shown here are for illustration purposes only. The braking distance for each individual car is dependent on the type of car, the brakes and the tyres used, as well as the road surface.

Continental summer passenger car tyres.

Put driving pleasure in motion. And eliminating danger.

ContiSportContact™ 5 P

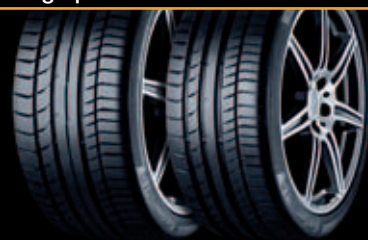
for high performance class vehicles

- Optimised for the different demands on the front and rear axles
- Improved grip and stability when cornering, sporty handling and short stopping distances particularly in the wet



exemplary

Issue 4/2012 - 245/30 ZR 20



ContiSportContact™ 5

for mid-sized and high performance class vehicles

- Short braking distances on wet and dry road surfaces
- High grip and safety on bends



highly recommended

Issue 07/2012 - 245/40 R 18 Y



ContiSportContact™ 3

for mid-sized and high performance class vehicles

- High braking performance on dry and wet road surfaces
- Excellent protection against aquaplaning



highly recommended

Issue 3/2011 - 225/45 R 17 V/W/Y



ContiPremiumContact™ 5

for mid-sized and executive class vehicles

- Extremely high performance level in all areas, especially for wet and dry braking
- Optimised noise and rolling comfort for relaxed driving



good

Issue 3/2012 - 205/55 R 16 V



ContiPremiumContact™ 2

for mid-sized and executive class vehicles

- Innovative 3-D tread grooves for highly precise steering behaviour
- Very high braking performance in dry and wet conditions



Testwinner, 935 points

Issue 2/2012 - 185/60 R 14 T/H



ContiEcoContact™ 5

for mid-sized and executive class vehicles

- Very low rolling resistance for high mileage and reduced fuel consumption
- Shorter and safer braking distances in wet conditions



good

Issue 3/2012 - 165/70 R 14 T



ContiEcoContact™ 3

for compact class vehicles

- High mileage and low fuel consumption
- Reduces braking distance on wet and dry road surfaces



mark: 2+, second place

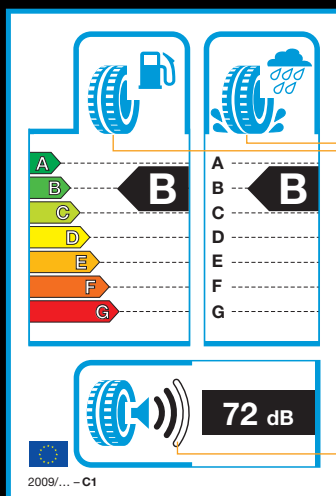
Issue 1/2009 - 195/65 R 15



Where the EU tyre label stops,
we begin.



Besides the three main criteria included on the EU tyre label, there are many more performance factors that go towards making a genuine premium tyre. All the more reason to refer to other sources like tyre tests, manufacturers' materials and retailers' recommendations in addition to the EU tyre label.



The illustration shows a typical EU Tyre Label; the ratings shown in each category are for illustration only.

Test criteria	EU tyre label	Tyre tests
Winter properties		
Traction in snow		✓
Handling		✓
Braking in snow/ice		✓
Dry conditions		
Driving stability		✓
Handling		✓
Braking		✓
Wet conditions		
Aquaplaning, longitudinal		✓
Aquaplaning, lateral		✓
Handling		✓
Braking	✓	✓
Rolling resistance	✓	✓
Wear		✓
High speed		✓
PAH oil level		✓
Noise		
Interior		✓
Exterior	✓	✓

Tough tyres demand
even tougher testing.



We test for your safety – around the world.

Throughout the year, we show time and time again that there are no limits to our tyre testing at our test sites in the USA, New Zealand, Sweden, Spain and, last but not least, on our in-house track in Hanover, the Contidrom – which is also a sought-after reference track for independent experts. Each type of our winter and summer tyres from all over the world is thus tested under all kinds of weather and road surface conditions. It goes without saying that this all takes place using the most modern testing methods and measuring technology.

Figures that speak for themselves.
And for our testing expertise.

- 67,000 tests each year
- 713 testers
- 140,000 tyres
- 40 million test kilometres during passenger car tests
- 160 million kilometres during durability and highspeed tests



Good arguments for your safety.

The leading partner to the automobile industry.

Car manufacturers only use premium tyres that conform to the highest standards of quality. Almost every third car in Europe is delivered with Continental tyres. That makes us one of the leading tyre manufacturers among initial fitters – and is the best proof of quality.